

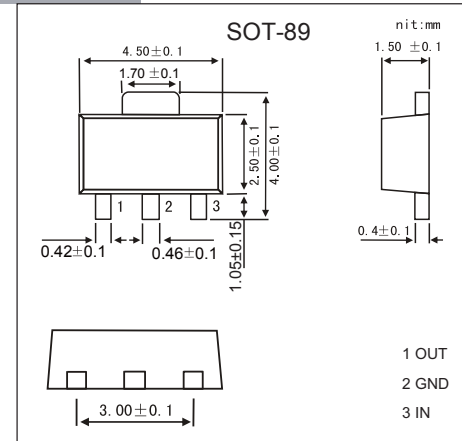
Three-terminal positive voltage regulator

FEATURES

- Maximum Output Current I_O : 0.1 A
- Output Voltage V_O : 5 V
- Continuous Total Dissipation
 P_D : 0.5 W ($T_a = 25^\circ\text{C}$)

MECHANICAL DATA

- Case: SOT-89 Small Outline Plastic Package
- Polarity: Color band denotes cathode end
- Mounting Position: Any



MAXIMUM RATINGS AND CHARACTERISTICS

@ 25°C Ambient Temperature (unless otherwise noted)

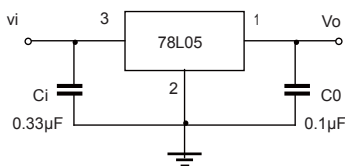
Parameter	Symbol	Value	Unit
Input Voltage	V_I	30	V
Operating Junction Temperature Range	T_{OPR}	0~+150	°C
Storage Temperature Range	T_{STG}	-55~+150	°C

ELECTRICAL CHARACTERISTICS AT SPECIFIED VIRTUAL JUNCTION TEMPERATURE

($V_i=10\text{V}$, $I_o=40\text{mA}$, $C_i=0.33\mu\text{F}$, $C_o=0.1\mu\text{F}$, unless otherwise specified)

Parameter	Symbol	Test conditions	Min	Typ	Max	Unit	
Output voltage	V_o	25°C	4.8	5.0	5.2	V	
		0-125°C	$7\text{V} \leq V_i \leq 20\text{V}$, $I_o=1\text{mA} \sim 40\text{mA}$	4.75	5.0	5.25	V
			$I_o=1\text{mA} \sim 70\text{mA}$	4.75	5.0	5.25	V
Load Regulation	ΔV_o	$I_o=1\text{mA} \sim 100\text{mA}$, 25°C		15	60	mV	
		$I_o=1\text{mA} \sim 40\text{mA}$, 25°C		8	30	mV	
Line regulation	ΔV_o	$7\text{V} \leq V_i \leq 20\text{V}$		32	150	mV	
		$8\text{V} \leq V_i \leq 20\text{V}$, 25°C		26	100	mV	
Quiescent Current	I_q	25°C		3.8	6	mA	
Quiescent Current Change	ΔI_q	$8\text{V} \leq V_i \leq 20\text{V}$, 0-125°C			1.5	mA	
		$1\text{mA} \leq I_o \leq 40\text{mA}$, 0-125°C			0.1	mA	
Output Noise Voltage	V_N	10Hz≤f≤100KHz, 25°C		42		uV	
Ripple Rejection	RR	$8\text{V} \leq V_i \leq 20\text{V}$, f=120Hz, 0-125°C	41	49		dB	
Dropout Voltage	V_d	25°C		1.7		V	

TYPICAL APPLICATION



Note: Bypass capacitors are recommended for optimum stability and transient response and should be located as close as possible to the regulators.

■ Typical Characteristics

